



KINGFISHER TANKPLUG

DESCRIPTION

Kingfisher TANKPLUG is a cement based powder, containing accelerators and binders which cause the powder to set extremely quickly to enable active water seepage to be stopped. It is used in conjunction with **Kingfisher TANKIT** or **Kingfisher AQUATECH** to provide a tanking membrane to stop lateral water penetration in below ground situations.

Where there is active water seepage **Kingfisher TANKPLUG** must be used to stop it prior to the membrane being completed. The tankplug will set with no shrinkage in 2 – 3 minutes depending upon the temperature. **Kingfisher TANKPLUG** will set even under water.

USES

Kingfisher TANKPLUG can be used to stop running water coming through a hole or crack in masonry. It can also be used as a rapid fix anchor set into a tanking membrane to ensure the membrane is kept intact.

APPLICATION

Preparation : - The surface to be sealed must be cleaned to accept the Tankit System, i.e. taken back to the substrate and all loose material removed. Any hole or crack should be chiselled out to a depth of 25mm as an inverted 'V' cut. If the area is holding water under pressure, then it may be useful to drill about 0.5 metres below the area and fit "weep pipes", to route the water to drain.

Mixing : - To use in a hole or crack, add the **Kingfisher TANKPLUG** powder to clean water in the proportion (by volume) of 1 part water to 4 parts **Kingfisher TANKPLUG**. Mix thoroughly with a trowel for approximately 45 seconds.

Application : - Hold the prepared mix in the hand wearing a rubber glove. Feel the heat generating and when the mixture starts to stiffen, force it into the hole or crack and hold it in position until it sets.

Mix only in small amounts, which can be used within approximately 2 minutes.

Alternatively, if the seepage is 'en masse' i.e. through a concrete block, the powder can be applied dry with a gloved hand until the seepage stops.

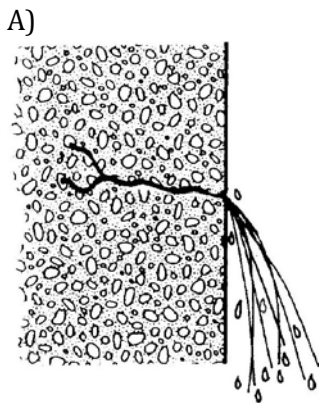
PACKAGING/COLOUR

Kingfisher TANKPLUG is supplied in 15 Kg. buckets and is coloured Grey.

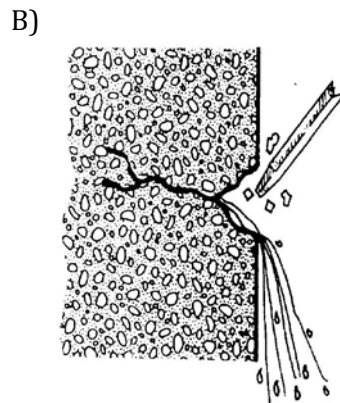
PRECAUTIONS

This product is strongly alkaline and gloves must be worn when handling. Prolonged exposure may cause sensitisation. If contact occurs skin should be washed with soap and water.

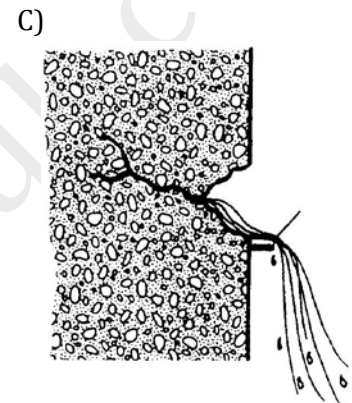
SUGGESTED PROCEDURE FOR USE OF KINGFISHER TANKPLUG



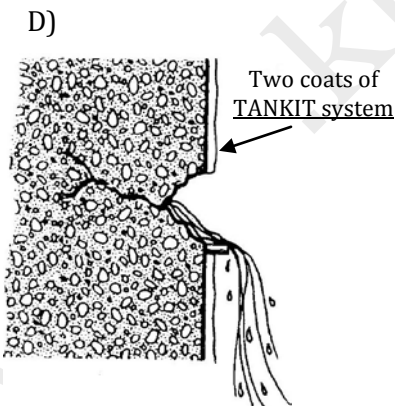
Water through a crack in the masonry.



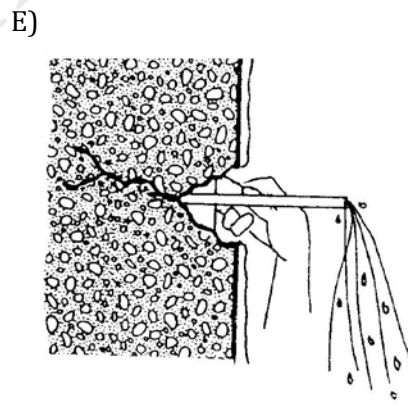
Chisel out a 25mm deep 'V' cut.



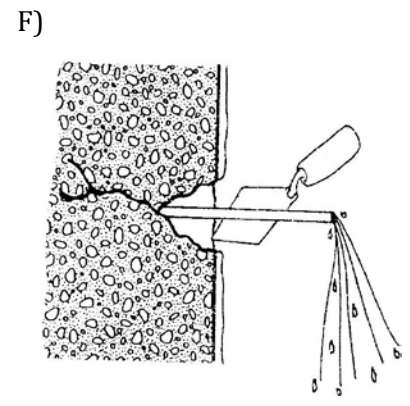
Attach a mortar 'nose' using the TANKPLUG. (This will stop water running down wall face).



Prepare surface elsewhere, Render 10mm thick and apply 2 coats of TANKIT or AQUATECH (Allow 3 days to cure).

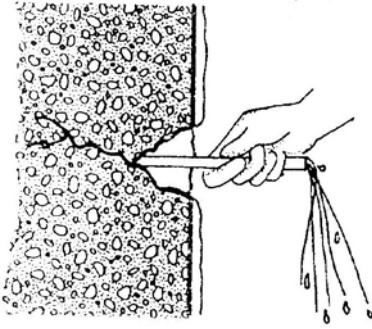


Fix a plastic tube into crack and TANKPLUG around it.



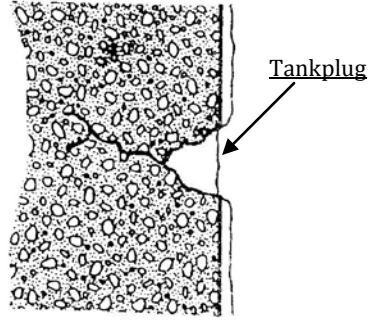
Point to flush using 3:1 sharp sand and Sulphate resisting cement with 1:1 water & KX-11.

G)



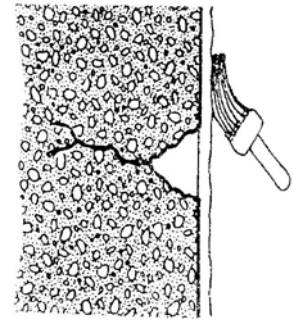
Remove plastic tube.

H)



Plug discharge hole by holding mixed TANKPLUG in hole until set

I)



Apply 2 coats of TANKIT or AQUATECH.

For further Health and Safety information on this product please refer to the Kingfisher Material Safety Data Sheet, copies of which are available from the Kingfisher Technical Dept. Tel. 01229 869100 or Fax 01229 869101.

THE INFORMATION GIVEN IN THIS DATA SHEET RELATES ONLY TO THE SPECIFIC MATERIAL DESIGNATED AND MAY NOT BE VALID FOR SUCH MATERIAL USED IN COMBINATION WITH ANY OTHER MATERIALS OR IN ANY PROCESS. SUCH INFORMATION IS TO THE BEST OF THE COMPANY'S KNOWLEDGE AND BELIEF, ACCURATE AND RELIABLE AS OF THE DATE INDICATED.

HOWEVER NO WARRANTY, GUARANTEE OR REPRESENTATION IS MADE AS TO ITS ACCURACY, RELIABILITY OR COMPLETENESS. IT IS THE USER'S RESPONSIBILITY TO SATISFY THEMSELVES AS TO THE SUITABILITY AND APPLICATION OF SUCH INFORMATION FOR THEIR OWN USE.